



# FD SERIES

FD75 // FD80 // FD90 // FD100 // FD110 // FD130





FREEDOM LIES IN BEING BOLD



# *Defining*

## **VOLUME**

The FD Series yacht offers interior space and volume that is unrivaled, allowing for layouts and amenities once limited to much larger builds.

## **STYLE**

From the design studio of Cor D. Rover, the FD Series yacht is defined by large windows, generous deck spaces and a striking, head-turning profile.

## **COMFORT**

The FD Series yacht boasts an innovative High Performance Piercing Bow and hull design that affords superb comfort in all sea conditions.



# Current Models

## CUSTOMIZATION COMES STANDARD

Each model featured is the result of a design evolution accommodating an owner's vision.

The FD Series yacht can be customized and engineered to your preference.

### FD75

Tailored to the Adventurous Yachtsman



### FD90

Five Staterooms, Infinite Options



### FD100

Innovation on Every Level



### FD80

On-Deck Master and Beach Club



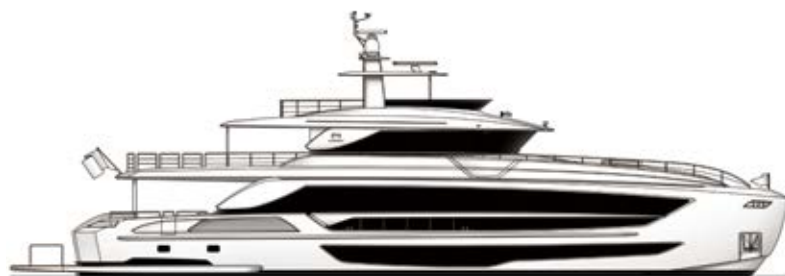
TRI - DECK



SKYLINE

## FD110

Volume, Views, Versatility



|  
*TRI - DECK*



|  
*SKYLINE*

## FD130

Luxury, Space, Sophistication





## *Design Team*

### **A COLLABORATION IN INNOVATION.**

At Horizon, over 38 years of yacht building experience has allowed our in-house team of naval architects, engineers, interior designers and craftsmen to consistently improve upon each build and develop new models. Our one million-square-foot complex encompasses four state-of-the-art facilities within the vibrant yachtbuilding center of Kaohsiung, Taiwan.



IN COLLABORATION WITH

*Cor D. Rover*  
D E S I G N

Horizon partnered with leading Dutch designer Cor D. Rover to conceptualize the FD Series, the first of its kind, in a revolutionary design that efficiently combines style and space with performance and comfort.





# *Signature Feature of the FD Series*

## **The High Performance Piercing Bow (HPPB).**

The FD Series features a High Performance Piercing Bow (HPPB) - a proprietary design by Horizon Yachts in consultation with Cor D. Rover. This design, in conjunction with the hybrid hull shape and tunnel design, delivers a shallow draft, more comfortable ride, lower resistance and excellent stability.



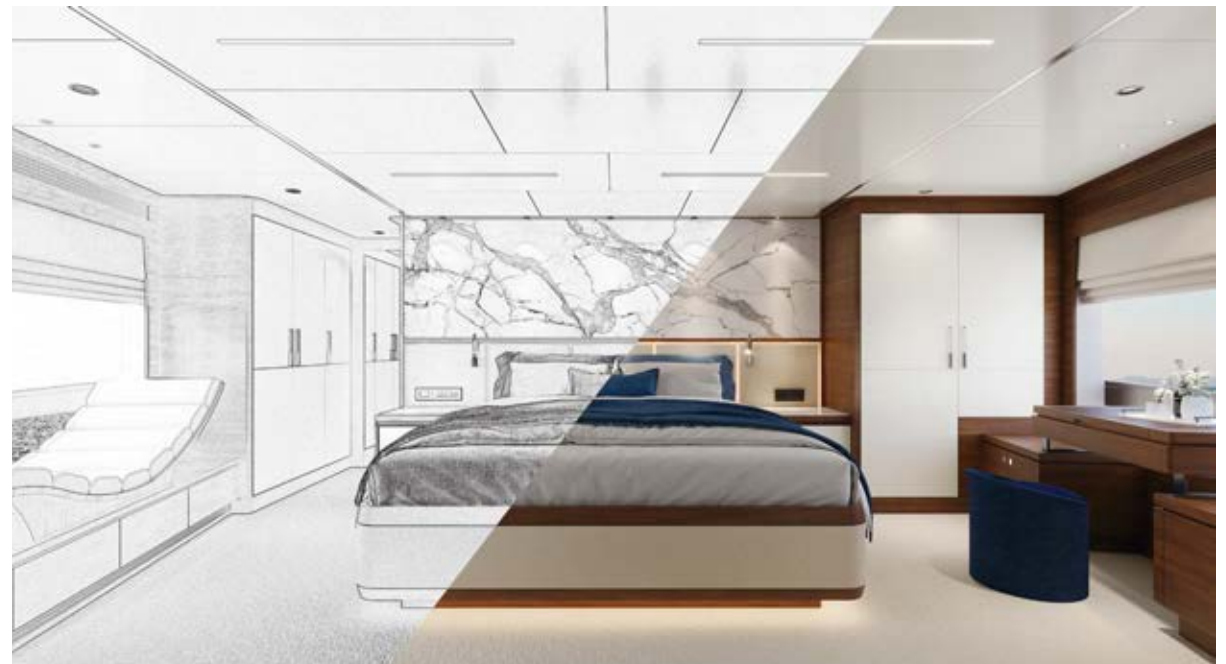


### FULL-HEIGHT WINDOWS.

Expansive floor-to-ceiling glass sections grace the main deck, immediately imparting a warm, serene and natural light-filled ambience.

### FULL-BEAM MASTER STATEROOM.

The master suite spans the full beam of the forward most section of the main deck and epitomizes minimalist chic.





# FD 75

*Tailored to the Adventurous Yachtsman*

---

## THE GAME-CHANGER.

Taking its place at the entrance of a series known for unparalleled volume, innovative functionality and intelligent layout, the FD75 is a remarkable achievement in terms of design and naval architecture.









simplicity in form  
and function









## Customization Capabilities

The FD75 is the perfect platform upon which you can define your unique layout.

Aboard the FD75, popular options include modifying the main salon to feature a formal dining and galley forward arrangement or incorporating a convertible dining table to maximize the space.







Nestled in the bow, the master suite spans the yacht's full beam.

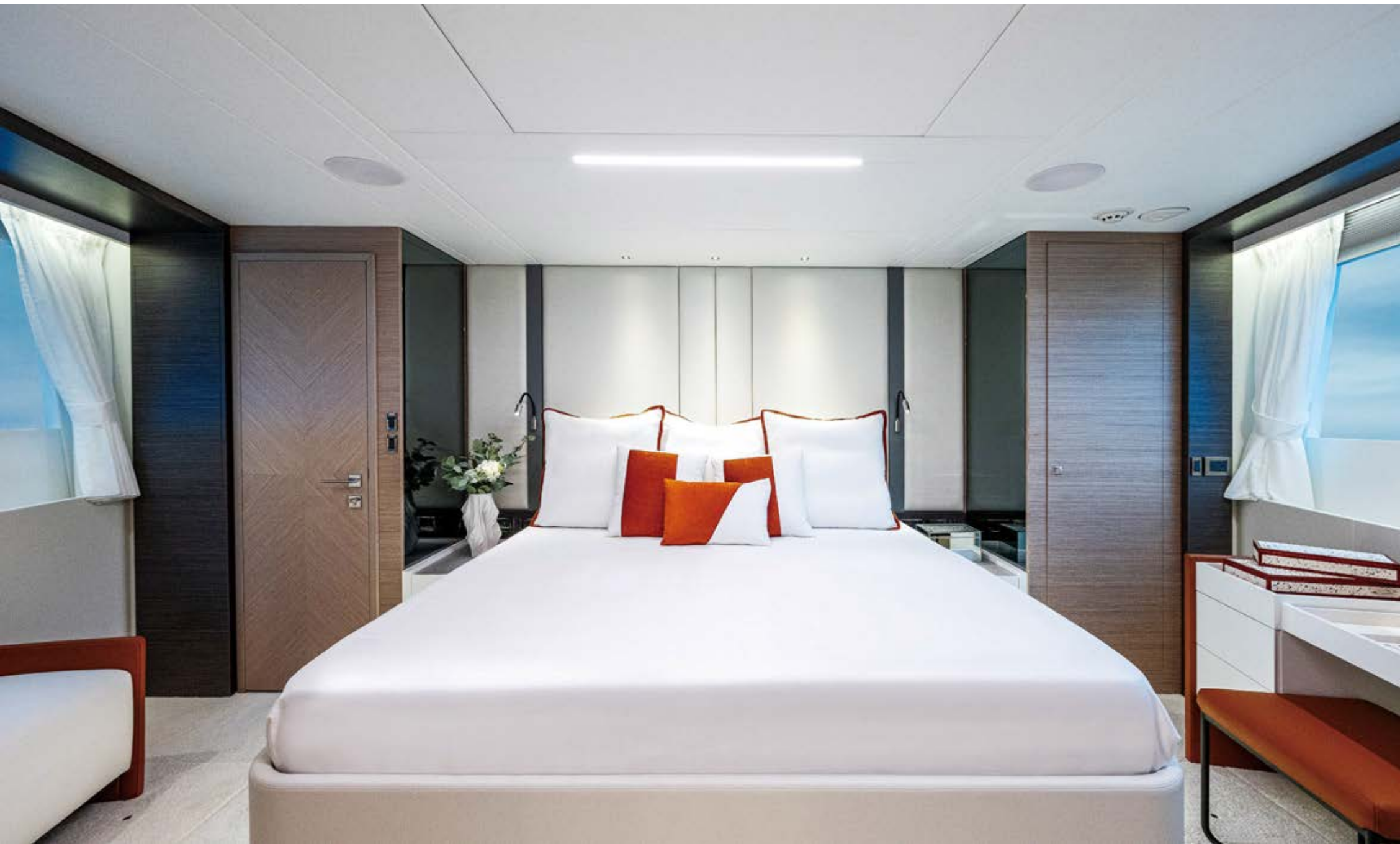
The ensuite features a large Smart mirror with Bluetooth, lighting options, time and temperature display and defogging features.



To achieve layout flexibility with a full-beam, On-Deck master and maintain the volume and innovative features that define the FD Series required thoughtful consideration and expert engineering.









# FD75 Open Bridge

## Specifications and Layout

### L.O.A

75' (22.86 m)

### L.W.L

67' 1" (20.45 m)

### Beam

20' 4" (6.2 m)

### Draft (half load)

5' 8" (1.73 m)

### Displacement (half load)

149,760 lb (67.93 t)

### Fuel

2,400 US gal (9,085 L)

### Fresh Water

300 US gal (1,136 L)

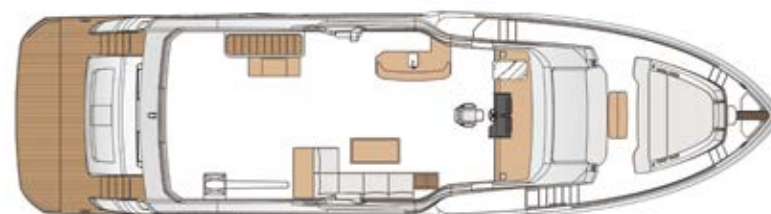
### Engines

Twin CAT C18A 1,136bhp

### Generators

Twin Onan 22.5kW (50Hz) or Twin Onan 29kW (60Hz)

\* Optional items may be included in the drawing and are for reference only



*BRIDGE DECK*



*MAIN DECK*



*LOWER DECK*





# FD80

*On-Deck Master & Beach Club*

---

## OWNERSHIP WITHOUT COMPROMISE.

Offering multiple configurations, such as a fully enclosed or split-use skylounge, the FD80 boasts functional outdoor spaces that rival those found on 90ft-plus motoryachts.













The FD80 offers all of the signature elements of a mid-size superyacht, such as spacious accommodations, a fully-equipped beach club and vast deck areas.







## Innovative + Multifunctional

The interior dining and galley area are popular  
spaces for owner customization.



An electric drop-down panel separates the island and most of the galley view from the salon when desired, allowing for open interaction between guests and the chef or complete privacy.











A forward VIP that can be transformed from a V-berth to a comfortable double bed.

The FD Series' signature interior volume is further enhanced by multi-functional spaces.



# FD80 Skyline

## Specifications and Layout

### L.O.A

80' 7" (24.56 m)

### L.W.L

71' 9" (21.87 m)

### Beam

22' 6" (6.87 m)

### Draft (half load)

5' 7" (1.7 m)

### Displacement (half load)

198,410 lb (90 t)

### Fuel

2,700 US gal (10,220 L)

### Fresh Water

400 US gal (1,500 L)

### Engines

Twin MTU 10V2000M96L 1,600hp

### Generators

Twin Onan 27kW (50Hz) or Twin Onan 29kW (60Hz)

\* Optional items may be included in the drawing and are for reference only



BRIDGE DECK ( LAYOUT 1 )



BRIDGE DECK ( LAYOUT 2 )



MAIN DECK



LOWER DECK





yacht ownership  
without compromise



# FD90

*Five Staterooms, Infinite Options*

---

## DISRUPTIVE INNOVATION IN ITS MOST BEAUTIFUL FORM.

Marked by contemporary lines, tremendous interior volume, and ingenious functionality, the FD90 sets the benchmark for innovation in yacht design.

Packed with amenities within its 23' 3" beam, this advanced mid-range yacht marries space with style and performance.







The opportunities for customization aboard the FD90 are limited only by the imagination.



Owners can specify an enclosed or split-use skylounge configuration.





Within its beamy interior, the FD90 can be customized to suit your style.

Areas from the salon to the galley to the staterooms can be outfitted with your selection of wood, stone and finishes.







Evolution and Innovation  
in its Most Beautiful Form







This VIP stateroom features a bed that separates and rotates outward to form two twins.



From the signature On-Deck master stateroom to the gracious lower-deck accommodations,

The FD90 is perfectly sized for comfort.

# FD90 Skyline

## Specifications and Layout

### L.O.A

90' (27.45 m)

### L.W.L

81' 4" (24.79 m)

### Beam

23' 3" (7.11 m)

### Draft (half load)

6' (1.83 m)

### Displacement (half load)

229,280 lb (104 t)

### Fuel

3,480 US gal (13,170 L)

### Fresh Water

400 US gal (1,500 L)

### Engines

Twin MTU 10V2000M96L 1,600hp

### Generators

Twin KOHLER 35kW (50Hz) or Twin KOHLER 40kW (60Hz)

\* Optional items may be included in the drawing and are for reference only



BRIDGE DECK ( LAYOUT 1 )



BRIDGE DECK ( LAYOUT 2 )



MAIN DECK



LOWER DECK







# FD 100

*Innovation on Every Level*

---

## A DESIGN EVOLUTION.

Available in a Skyline or Tri-Deck version, the FD100 offers five staterooms, including a full-beam master suite on the main deck. The Tri-Deck layout option offers a lightweight open flybridge equipped with a helm and seating area atop the bridge deck, which features a forward wheelhouse, interior skylounge with dayhead and bar and jacuzzi aft.







multiple levels  
of innovation











The aft deck features a large U-shaped sofa as well as a large outdoor dining table for ten.

## Outfitted with Superyacht Amenities

FD 100 // FD SERIES





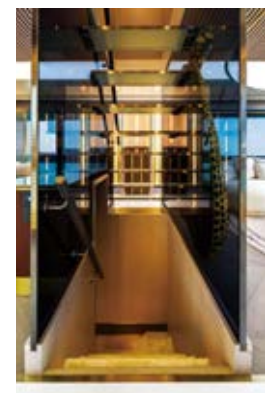




# Artful Design Meets Breathtaking Vistas

The interior exudes an  
elegant feel  
and is highlighted by  
modern artistic elements  
that add visual interest.

FD 100 // FD SERIES













This versatile space of the lower deck foyer can accommodate three queen and convertible twin staterooms or a gym depending on owner's preferences.

# FD100 Tri-Deck

## Specifications and Layout

### L.O.A

101' 7" (30.97 m)

### L.W.L

92' 4" (28.16 m)

### Beam

23' 9" (7.25 m)

### Draft (half load)

6' 2" (1.88 m)

### Displacement (half load)

282,190 lb (128 t)

### Fuel

4,000 US gal (15,140 L)

### Fresh Water

400 US gal (1,500 L)

### Engines

Twin CAT C32A 1,600hp

### Generators

Twin KOHLER 45kW (50Hz) or Twin KOHLER 53kW (60Hz)

\* Optional items may be included in the drawing and are for reference only



*TRI-DECK*



*BRIDGE DECK*



*MAIN DECK*



*LOWER DECK*



# FD100 Skyline

## Specifications and Layout

### L.O.A

101' 7" (30.97 m)

### L.W.L

92' 4" (28.15 m)

### Beam

23' 9" (7.25 m)

### Draft (half load)

6' (1.83 m)

### Displacement (half load)

273,370 lb (124 t)

### Fuel

4,000 US gal (15,140 L)

### Fresh Water

400 US gal (1,500 L)

### Engines

Twin CAT C32A 1,600hp

### Generators

Twin KOHLER 45kW (50Hz) or Twin KOHLER 53kW (60Hz)

\* Optional items may be included in the drawing and are for reference only



BRIDGE DECK



MAIN DECK



LOWER DECK



# FD 110

*Volume, Views, Versatility*

---

## THE NEXT-GENERATION SUPERYACHT.

Offered in a Tri-Deck or Skyline configuration, the FD110 comfortably accommodates a crew of six in forward crew quarters with a large, fully equipped beach club aft. This five-stateroom yacht features an On-Deck deluxe master stateroom and plentiful dining and entertaining areas throughout.













The deck areas aboard the FD110 provide magnificent areas for relaxing and entertaining.

A wide-angle photograph of a modern motor yacht's deck. The deck is white and features a large, curved seating area with light gray cushions and several yellow and white patterned throw pillows. Two white rectangular tables are mounted on stainless steel pedestals. To the right, there is a built-in white hot tub with a glass cover. The yacht is on a calm body of water, with a row of houses and palm trees visible on the opposite shore under a cloudy sky. The yacht's white hull and part of its cabin are visible on the left.

al fresco living  
gracious deck spaces









Augmented by the generous volume that defines the Series, the FD110 is further enhanced by large windows and luxurious finishes.





## Haven of Serenity, a Feast for the Senses

Space and light feature prominently aboard, from the master stateroom and en suite to the lower deck guest accommodations.



A spacious his-and-hers ensuite  
with a grand shower.





## Superyacht Finishes, Design Efficiency





The forward wheelhouse features navigation equipment and a trio of helm seats, allowing the space to be open to or closed off from the skylounge as desired.





The Beach Club can be customized  
to suit the owner's lifestyle.







# FD110 Tri-Deck

## Specifications and Layout

### L.O.A

111' 6" (33.99 m)

### L.W.L

99' 11" (30.47 m)

### Beam

24' 6" (7.47 m)

### Draft (half load)

6' 2" (1.88m)

### Displacement (half load)

341,720 lb (155 t)

### Fuel

4,500 US gal (17,030 L)

### Fresh Water

800 US gal (3,025 L)

### Engines

Twin CAT C32A 1,600hp

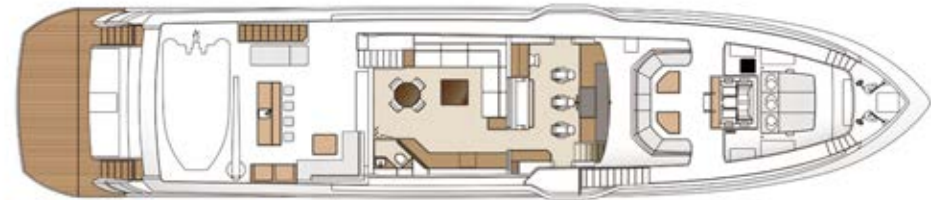
### Generators

Twin KOHLER 55kW (50Hz) or Twin KOHLER 55kW (60Hz)

\* Optional items may be included in the drawing and are for reference only



*TRI-DECK*



*BRIDGE DECK*



*MAIN DECK*



*LOWER DECK*



# FD110 Skyline

## Specifications and Layout

### L.O.A

111' 6" (33.99 m)

### L.W.L

101' 8" (31 m)

### Beam

24' 6" (7.47 m)

### Draft (half load)

6' (1.83 m)

### Displacement (half load)

324,080 lb (147 t)

### Fuel

4,500 US gal (17,030 L)

### Fresh Water

800 US gal (3,025 L)

### Engines

Twin CAT C32A 1,600hp

### Generators

Twin KOHLER 55kW (50Hz) or Twin KOHLER 55kW (60Hz)

\* Optional items may be included in the drawing and are for reference only



BRIDGE DECK



MAIN DECK



LOWER DECK



# FD 130

*Luxury, Space, Sophistication*

---

## **DARING TO BE BOLDER.**

The largest concept offered in the acclaimed FD Series, the FD130 makes an elegant entrance, with her head-turning superyacht styling matched by superb performance and stability beneath the waterline. The FD130 incorporates double salons, a spacious galley, five staterooms including an On-Deck master, and accommodations for eight crew.

















The FD130 superyacht features a sophisticated interior exuding luxury and style. The five-stateroom layout is paired with exterior deck options and stability and comfort below the waterline.

FD 130 // FD SERIES





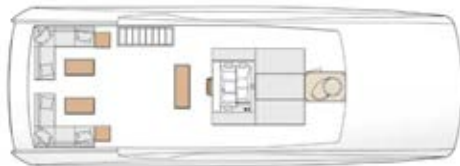


## Elegance + Performance

The FD130 is truly a fully custom build, which allows owners to capitalize on the engineering and proven performance and hull design as well as the voluminous and bright interior spaces that define the FD Series.

# FD130 Tri-Deck

Concept and Layout Designed by You



*TRI-DECK*



*MAIN DECK*



*BRIDGE DECK*



*LOWER DECK*



WHAT'S NEXT?



# Our Owners Don't Chase Dreams, They Define Them

---

## PUSHING THE ENVELOPE.

For more than 38 years, Horizon has pioneered the  
design and build of exceptional motoryachts for discerning owners.

Leaders in advanced composite technologies  
and naval architecture, Horizon sets the standards for innovation  
so our owners can confidently define their dreams.









*DEFINE YOUR HORIZON*

